

Goat Discovery



Breeds



Alpine



American Cashmere



Angora



Boer



Kiko



Lamancha



Nubian



Oberhasli



Pygmy



Saanen



Spanish



Tennessee Fainting

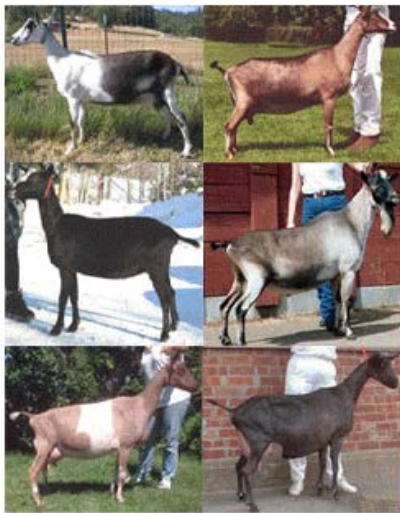


Toggenburg



Used by permission for use in Extension programs





Origin – Alps of Switzerland.

Type – Dairy breed.

Hair – Short to medium length hair with colors that may range from pure white through shades of fawn, gray, brown, black, red, bluff, piebald, or various shadings or combinations of these colors.

Face/Ear Type – Straight or slightly dished face and ears that are medium sized, fine textured, and erect.

Important Traits – Hardy, adaptable animals that thrive in any climate while maintaining good health and excellent production.



Origin – Australia and New Zealand.

Type – Fiber breed.

Hair – The fleece consists of the very fine, crimped down (cashmere) and the usually longer, outside, coarse, straight guard hairs. The hair can be solid colored or combinations of colors, with solid colors much preferred.

Face/Ear Type – Straight face or "Roman" nose, and ears that are typically down-turned.

Important Traits – Insulative properties of dual coat, hardy, and high health.



Origin – District of Angora in Asia Minor.

Type – Fiber breed.

Hair – The hair (mohair) is very similar to coarse wool in the size of fiber and should be solid white in color.

Face/Ear Type – Straight or slightly dished face, and ears that are heavy and drooping.

Important Traits – Mohair production, browsing ability, meat production, and not as prolific as other goats (single kids more common than twins).



Origin – Africa.

Type – Meat breed.

Hair – Short, glossy hair that is colored light to dark red on the head and ears and white on the remainder of the body. A white face blaze should be evident.

Face/Ear Type – Gently curving nose, and large, floppy ears (lop ears).

Important Traits – Meat yield, growth rate, browsing ability, fertility, adaptability to wide climatic conditions, and extended breeding season.

Boer

Angora

American Cashmere

Alpine



Origin – New Zealand.

Type – Meat breed.

Hair – Short to medium length hair that can be a range of colors, but white is the most predominant.

Face/Ear Type – Straight or slightly dished face, and ears that are medium length and somewhat pendulous.

Important Traits – Meat yield, growth rate, constitution, and twinning rate.



Origin – Oregon, United States.

Type – Dairy breed.

Hair – Short, fine, and glossy hair that can be almost any color or combination of colors.

Face/Ear Type – Straight or slightly dished face, and very small ear flaps that almost make them look earless.

Important Traits – Milk yield, high butterfat, sturdy, hardy, and excellent temperament.



Origin – England.

Type – Dairy breed.

Hair – Short, fine, and glossy hair with any color or colors (solid or patterned) being acceptable. However, black, red or tan are the most common colors, any of which may be in combination with white.

Face/Ear Type – A "Roman" or convex nose, and ears that are very long and pendulous (a "bell" shape) that hang close to the head.

Important Traits – High butterfat content, extended breeding season, best suited for hot conditions, and multi-purpose use (milk, meat, and hide).



Origin – Switzerland.

Type – Dairy breed.

Hair – Short, fine, and glossy hair that is a light to a deep red bay color (chamois), with black markings on the face, forehead, ears, poll, neck, and back, belly and udder, and legs.

Face/Ear Type – Straight or dish shaped face, and ears that are medium in length and erect.

Important Traits – Milk production and vigorous.



Oberhasli

Nubian

Lamancha

Kiko



Origin – Africa.

Type – Exotic and meat breed.

Hair – Straight, medium length hair with all colors acceptable. The predominate coloration is a grizzled (agouti) pattern produced by the intermingling of light and dark hairs, of any color.

Face/Ear Type – Straight or slightly dished face, and ears that are medium sized, firm, and erect.

Important Traits – Hardy, good-natured, gregarious, and well-muscled.



Origin – Saanen Valley of Switzerland.

Type – Dairy breed.

Hair – Short and fine hair that is white or light cream in color, with white preferred.

Face/Ear Type – Straight or slightly dished face, and ears that are erect and alertly carried, preferably pointed forward.

Important Traits – Heavy milkers, rugged bone, and vigor. Saanens are sensitive to excessive sunlight and perform best in cooler conditions.



Origin – Descendants of goats brought to America by Spanish explorers.

Type – Meat breed.

Hair – Short to medium length hair that can be almost any color.

Face/Ear Type – Straight or slightly dished face, and ears that are medium length and somewhat pendulous.

Important Traits – Meat yield, tough and hardy, agile, and browsing ability.



Origin – United States.

Type – Meat breed.

Hair – Short to medium length hair and although black and white is the predominant color, multi-colors also exist.

Face/Ear Type – Straight or slightly dished face, and ears that are medium length and point forwards.

Important Traits – Meat yield, good milk yield, good mothers, and are myotonic (they lock up or faint when frightened or excited).



Tennessee Fainting

Spanish

Saanen

Pygmy



Origin – Toggenburg Valley of Switzerland.

Type – Dairy breed.

Hair – Short to medium length hair whose color is solid varying from light fawn to dark chocolate with distinct white markings on the ears, face, hind legs, forelegs, each side of tail, and wattles.

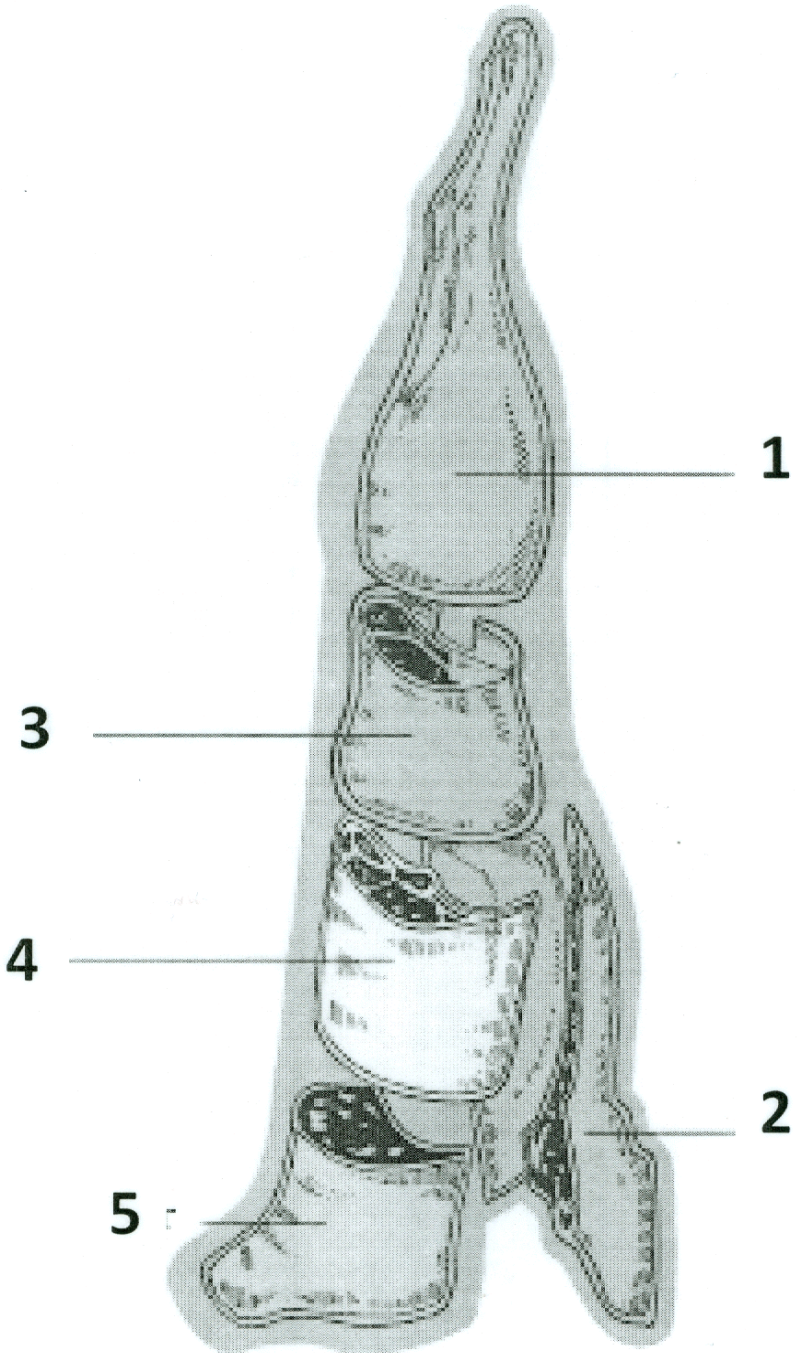
Face/Ear Type – Straight or slightly dished face, and ears are erect and carried forward.

Important Traits – Milk production, udder development, sturdy, and vigorous.

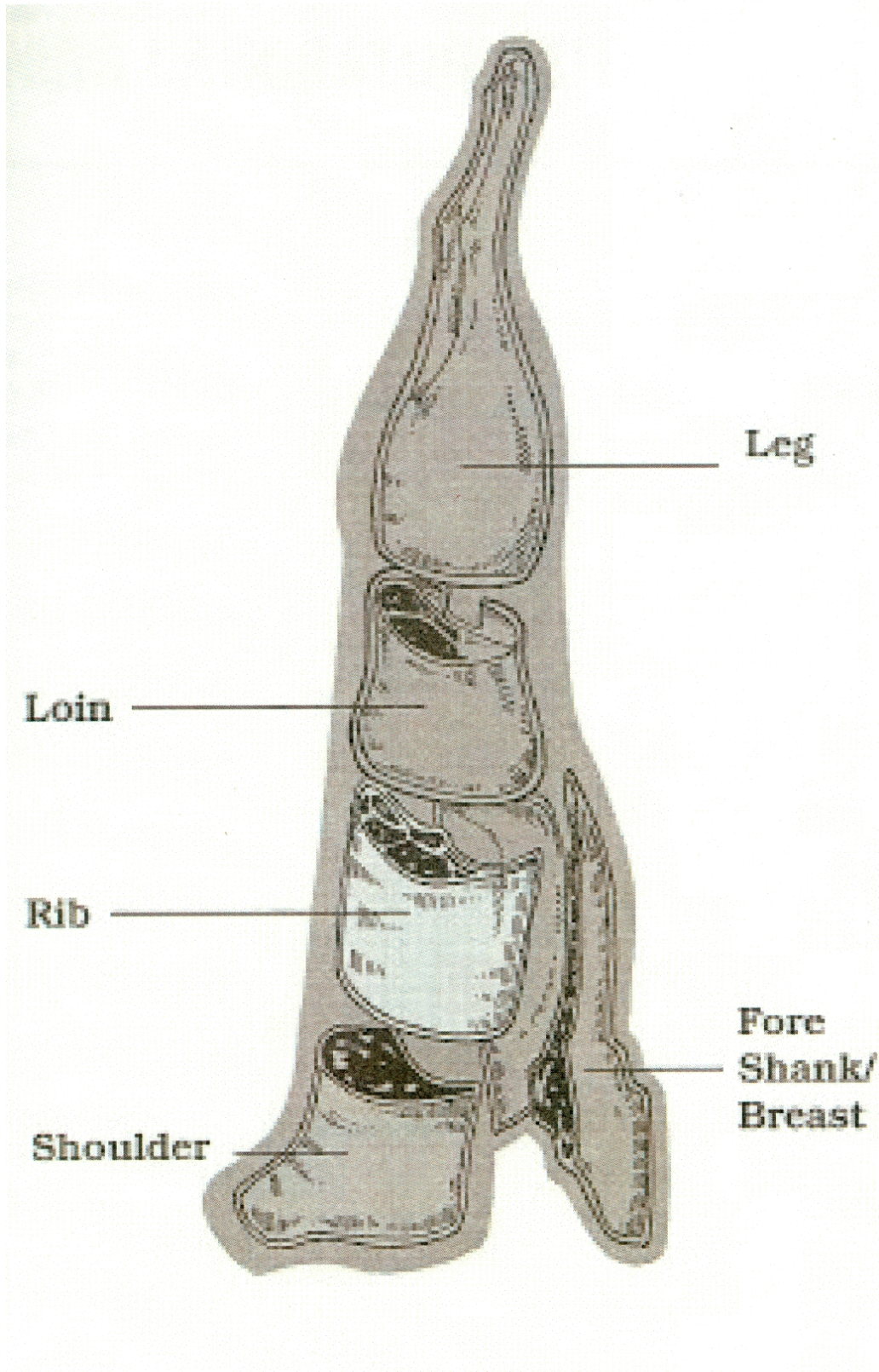


Toggenburg

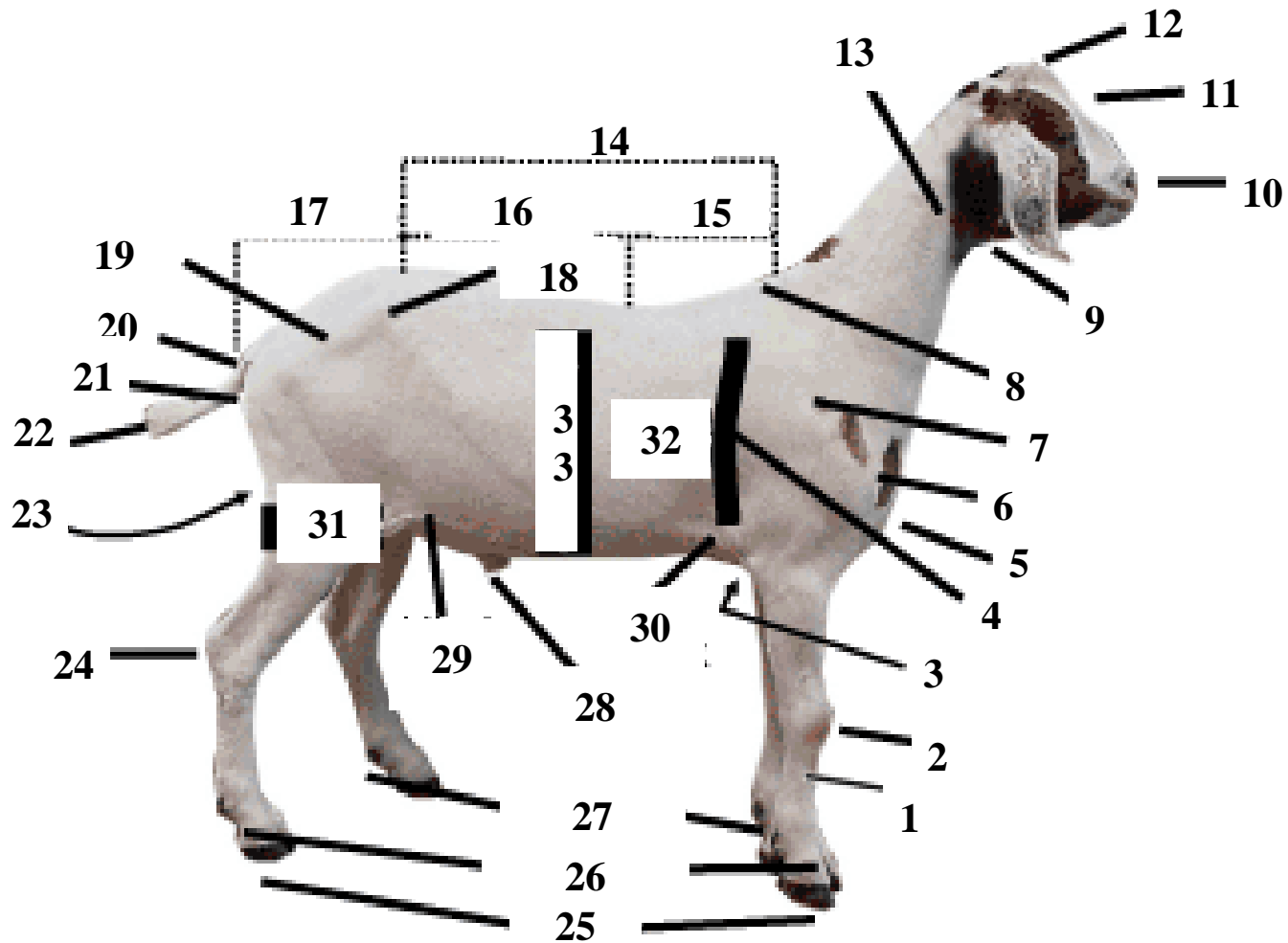
Goat Wholesale Parts



Goat Wholesale Parts – Senior



External Goat Parts



External Goat Parts

