

Beef Cattle Discovery Breeds



Angus



Brahman



Brangus



Charolais



Chianina



Gelbvieh



Hereford



Limousin



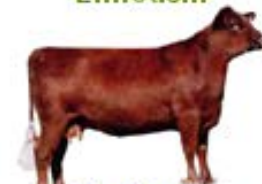
Maine Anjou



Polled Hereford



Red Angus



Red Poli



Santa Gertrudis



Shorthorn



Simmental



Tarentaise



Used by permission for use in Extension programs





Bull

Origin – Aberdeen and Angus Counties of Scotland.

Color – Solid black (may have a little white on the rudder).

Other Descriptors – Polled (hornless), moderate frame size, small upturned ears, and refined head.

Important Traits – Excellent meat quality (nicely marbled), calving ease, and hardy.



Cow



Bull

Origin – Developed in U.S. from *Bos indicus* cattle from India.

Color – Vary in color from very light grey or red to almost black.

Other Descriptors – Large hump over the top of the shoulder and neck, an abundance of loose skin, large down-turned ears, horns, and moderate frame size.

Important Traits – Heat tolerance, insect and parasite resistance, hardiness, and maternal instincts.



Cow



Bull

Origin – Developed in the U.S. (primarily at USDA Experiment Station in Jeanerette, Louisiana). Genetics are $\frac{3}{8}$ Brahman and $\frac{5}{8}$ Angus.

Color – Solid black.

Other Descriptors – Polled (hornless), moderate frame size, down-turned ears, and loose dewlap and prepuce.

Important Traits – Disease resistance, heat resistance, hardiness, and maternal instincts.



Cow



Bull

Origin – Charolais, France.

Color – White to cream.

Other Descriptors – Medium to large frame size, pink muzzle, pale hooves, horned or polled, and short broad head.

Important Traits – Heavily muscled, excellent growth rate, good feed conversion, and late maturity.



Cow

Charolais

Brançus

Brahman

Angus



Bull



Cow

Origin – Italy.

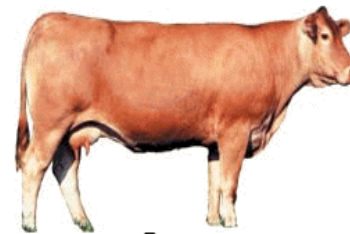
Color – White to steel gray. Breeders have recently selected for solid black coloring.

Other Descriptors – Very large frame size (long legs), short hair, black pigmented skin (black muzzle), black switch, long straight face, and short horns.

Important Traits – Well defined muscling and good growth rate.



Bull



Cow

Origin – Bavaria, Germany.

Color – Vary in color from red to yellowish red. Breeders have recently selected for solid black coloring.

Other Descriptors – Light skin pigmentation and short horns or polled.

Important Traits – Growth rate, muscling, early puberty, calving ease, and mothering ability.



Bull



Cow

Origin – Herefordshire, England.

Color – Rust brown to deep rich red body color with white on the face, crest, dewlap, underline, switch, and legs below the knee and hock.

Other Descriptors – Moderate frame size, horns that typically curve down sides of head, deep brisket, well developed forequarters, broad head, and stocky legs.

Important Traits – Foraging ability, docile, and good fertility.



Bull



Cow

Origin – Limousin and Marche regions of France.

Color – Yellow straw to reddish gold with lighter circles around eyes and muzzle.

Other Descriptors – Medium to large frame size, long bodied, small head, and pale horns and hooves.

Important Traits – Heavily muscled, high carcass yield, growth rate, and feed efficiency.

Hereford

Limousin

Chianina

Gelbvieh



Bull



Cow

Origin – Maine and Anjou river valleys of France.

Color – The traditional coloring is a very dark red with white markings on the head, belly, rear legs, and tail (white on other parts of the body is also common). Breeders have recently selected for solid black coloring.

Other Descriptors – Large frame size and horned or polled.

Important Traits – Muscling, growth rate, disposition, and milk production.



Bull



Cow

Origin – Des Moines, IA (developed from the Hereford of Herefordshire, England).

Color – Rust brown to deep rich red body color with white on the face, crest, dewlap, underline, switch, and legs below the knee and hock.

Other Descriptors – Moderate frame size, polled (hornless), deep brisket, well developed fore-quarters, broad head, and stocky legs.

Important Traits – Foraging ability, docile, and good fertility.



Bull



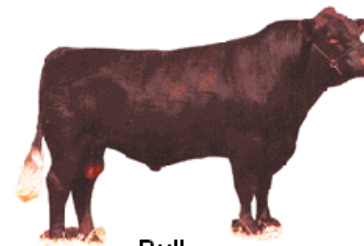
Cow

Origin – British Isles.

Color – Red to reddish brown.

Other Descriptors – Polled (hornless), moderate frame size, small upturned ears, and refined head (same as Angus except for color).

Important Traits – Excellent meat quality (nicely marbled), calving ease, and hardy.



Bull



Cow

Origin – Suffolk and Norfolk Counties of England.

Color – Light to dark red.

Other Descriptors – Polled (hornless), white muzzle and switch, and small to moderate frame size.

Important Traits – Fertility, mothering ability, calving ease, forage efficiency, and gentle disposition.

Red Angus

Red Poll

Main Anjou

Polled Hereford



Bull

Origin – Developed in U.S. on King Ranch in Kingville, Texas. Genetics are approximately $\frac{5}{8}$ Shorthorn and $\frac{3}{8}$ Brahman.

Color – Deep cherry red to reddish brown.

Other Descriptors – Moderate frame size, loose skin in dewlap and sheath, horned or polled, and large down-turned ears.

Important Traits – Heat and tick resistance, calving ease, mothering ability, and milk supply.



Cow



Bull

Origin – Tees River Valley in England.

Color – Red, white, red and white, or roan.

Other Descriptors – Moderate frame size, short broad head, wide set eyes, and short horns.

Important Traits – Early maturity, reproductive performance, mothering ability, disposition, and hardiness.



Cow



Bull

Origin – Simme Valley of Switzerland.

Color – Yellowish brown to straw to dark red with white markings on the head, brisket, belly, and lower parts of the legs. May have white patches on the body.

Other Descriptors – Large frame size, horned or polled, and long and deep bodied.

Important Traits – Heavily muscled, high carcass yield, growth rate, feed efficiency, and milk production.



Cow



Bull

Origin – ATarentaise Valley of France.

Color – Vary in color from red to reddish brown.

Other Descriptors – Moderate frame size and horned or polled.

Important Traits – Milking ability, calving ease, and thriftiness.



Cow

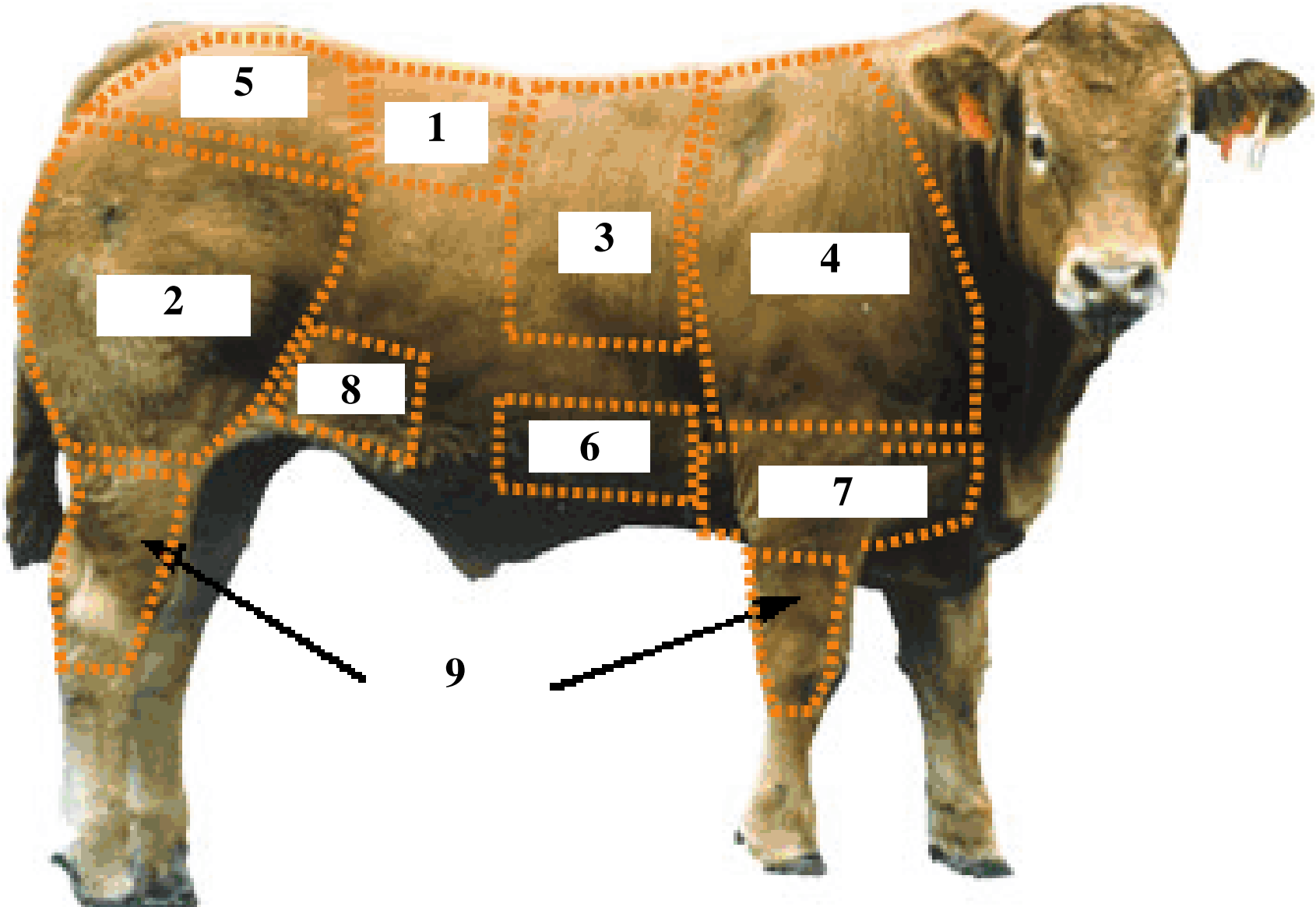
Tarentaise

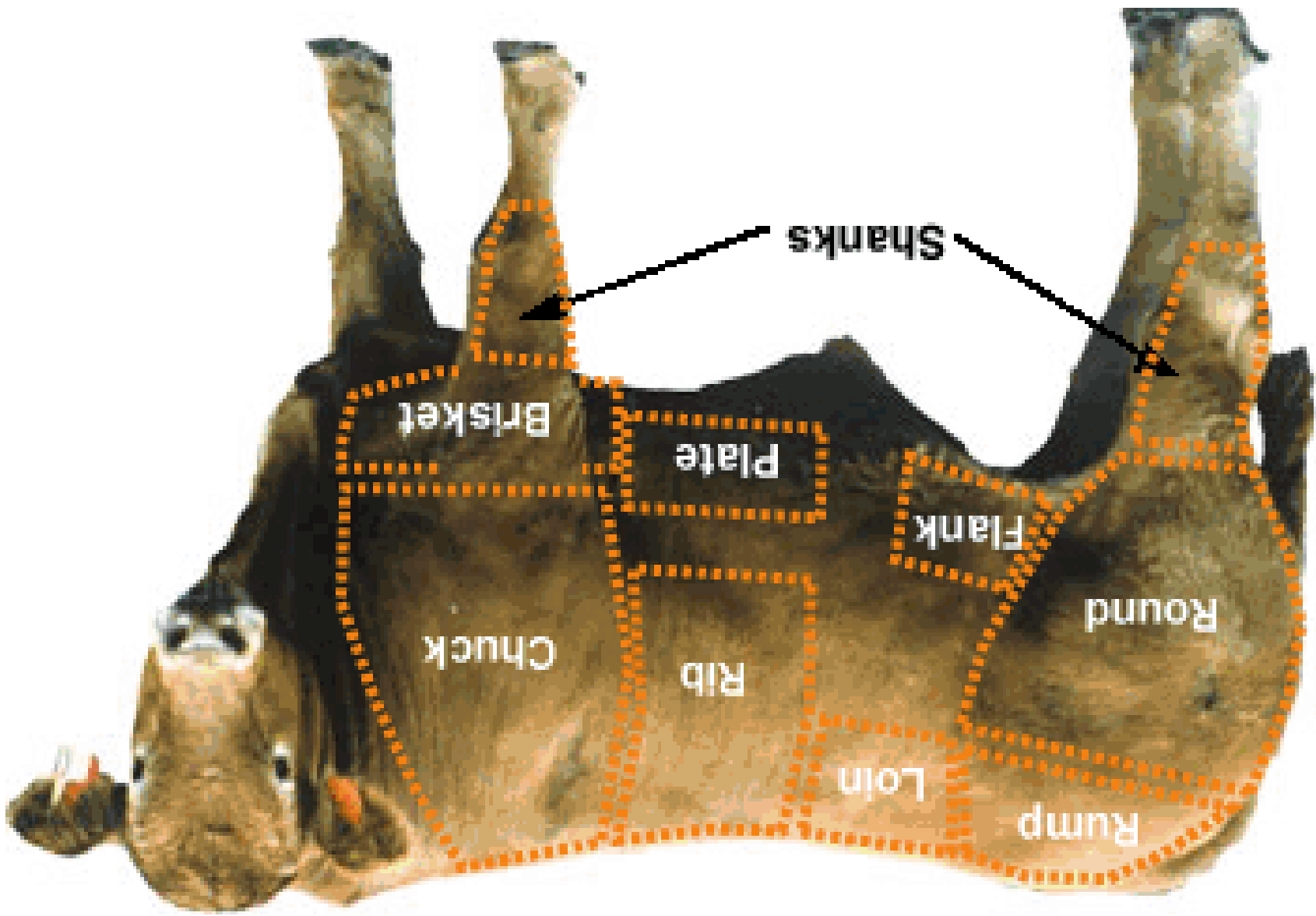
Simmental

Shorthorn

Santa Gertrudis

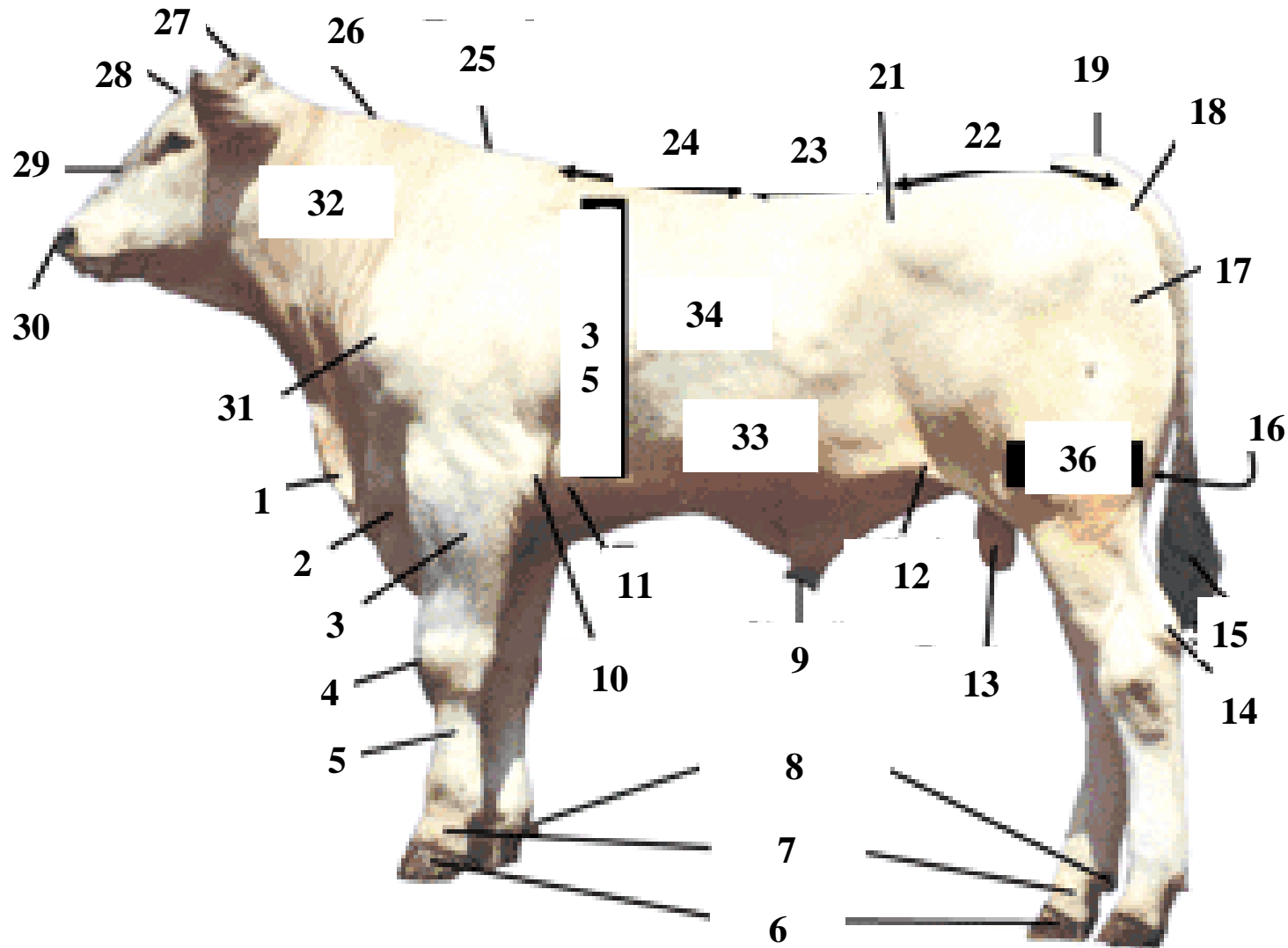
BEEF WHOLESALE CUTS

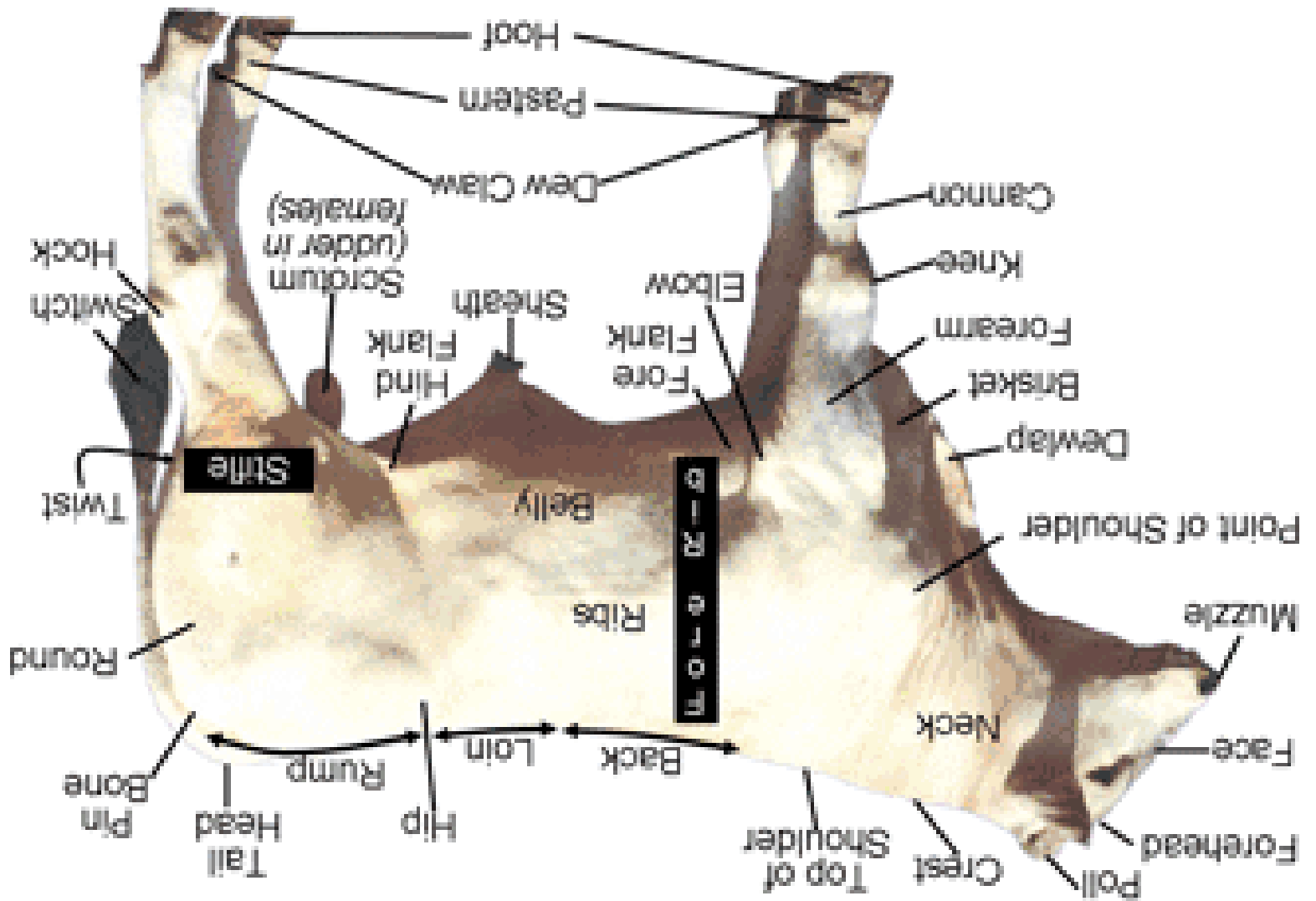




BEEF WHOLESALE CUTS

External Beef Parts





External Beef Parts