

## What are you planning on doing with your animals?

**Interstate Movement** is transporting livestock across state lines. This movement requires:

- **Health inspection** and a **brand inspection** for sheep and cattle. Only a **health inspection** for goats and swine. Health inspections must meet the requirements of the state you are entering.

**Intrastate Movement** is transporting livestock within the state of Wyoming. This movement requires:

- **Brand inspection** if crossing county lines with cattle and sheep.
- No **health inspection** is required unless attending an event that has their own requirements.



### Purchasing livestock requirement:

- Buying animals from out-of-state, seller will need to provide you with a **health inspection**, **bill of sale** and **brand inspection** if coming from a state that requires brand inspections.
- Purchasing from an in-state producer, seller will provide you with a **bill of sale**. For cattle and sheep you will need a brand inspection as well.

### Selling livestock requirements :

- If animals will be leaving the state you will need to provide the purchaser a **bill of sale** and **health inspection**. **Cattle & sheep will need a brand inspection** as well.
- Animals staying in state require a **bill of sale**. **Sheep & cattle will need a brand inspection**.



For Information about the  
Wyoming 4-H Program  
(307) 766-5170



For more information about:

### Health Inspections

Wyoming State Veterinarian  
Office

(307) 777-7515

### Brand Inspections

Wyoming Brand Board  
(307) 777-6439

Created by Dawn Sanchez

Updated: January 2020



## Wyoming 4-H Livestock Movement Guide For Beef, Sheep, Swine and Goats

 Are you planning on going to a jackpot, camp or workshop?

 Are you selling livestock?

 Are you purchasing livestock?

**Do You Need a Health or a  
Brand Inspection? Or Both?**

## Brand Inspections:

All producers selling cattle and/or sheep or moving animals across county or state lines (for any purpose) are required to obtain a brand inspection. Pigs and goats do not need a brand inspection only health inspections.

In the State of Wyoming there are different brand inspection options depending on the purpose of the movement.

**A Form** - a document that is used for intrastate and/or interstate movement of livestock, also issued for a change in ownership. Good for only one trip.

Cost: \$1.85/cattle, \$0.40/sheep + one trip charge

**L Form** - a document issued as a permanent lifetime inspection to the owner of livestock used for rodeo, show, pleasure or work. Is void upon change of ownership.

Cost: \$23.00/per animal + one trip charge

**B Form** —a document issued at licensed Wyoming livestock markets as a title and clearance to destination.

Cost: \$1.85/cattle, \$0.40/sheep + one trip charge

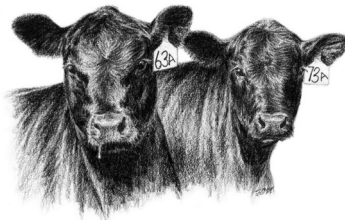
**H Form** - a document issued for intrastate movement of work, show or rodeo stock good for one-year from the date of issue.

Cost: \$16.00/per animal + one trip charge

Each form has a fee schedule assigned to it. Along with the form fee, brand inspectors charge a trip charge of \$11.25 for each time they come to do an inspection. Therefore, if you are planning on transporting your animal numerous times within the year it may be financially feasible to purchase a L or H Form. Discuss the possibilities with your brand inspector.

If you are planning on transporting or selling your livestock contact your county's brand inspector to do a physical inspection of your animal and provide you with a brand inspection paper. Find an inspector near you at:

<https://wlsb.state.wy.us/public-contacts>



## Health Inspections:

All producers importing or exporting livestock into the State of Wyoming are required to have a health inspection from an accredited and licensed veterinarian. Animals moving within the state do not need a health inspection unless the venue they are traveling to requires it. This includes sheep, swine, goats and cattle.

### Health inspection requirements:

- All required tests must be completed on each animal.
- Individual identifications must be written on the health certificate for each animal.
- All animals must be current on required vaccinations.
- Health inspections will need to include entry permit numbers from the state entering.



**EXHIBITORS** — Youth exhibiting livestock will need to check with show guidelines to be sure and include any required statements on the health inspections.